

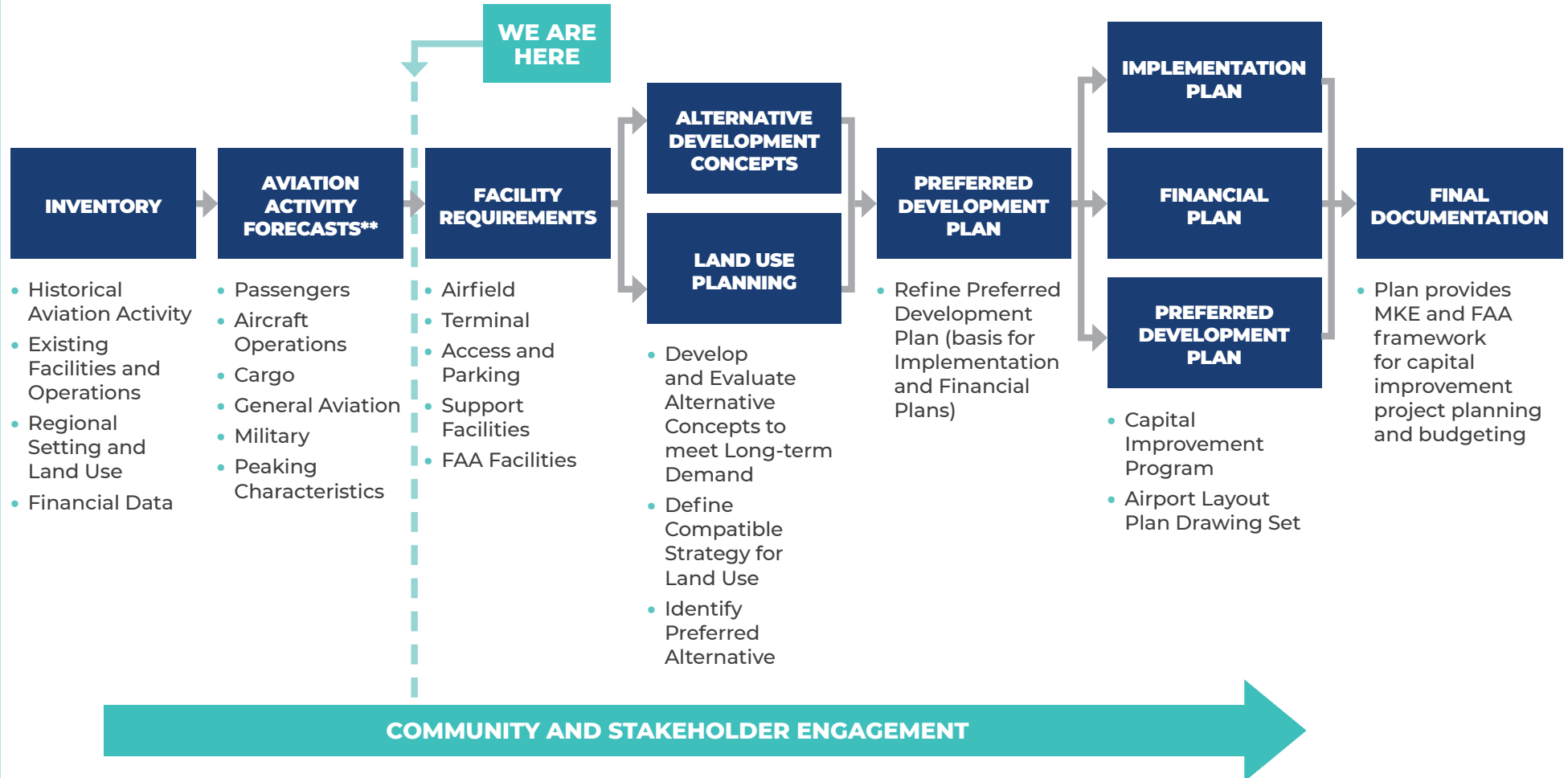
WELCOME TO THE
MILWAUKEE MITCHELL INTERNATIONAL AIRPORT



PUBLIC OPEN HOUSE

MKEUPDATE.COM

Master Planning Process



**** Requires FAA Approval**

About MKE

- Purchased in 1926 → First terminal building opened in 1927
- Five runways
- Experienced **9.3% passenger growth** from 2015-2018
- Only airport in Wisconsin or Illinois with service from all four major domestic airlines
- **44 Non-stop destinations**; 160 one-stop international destinations
- Largest airport in Wisconsin
- Located 6 miles south of downtown
- Bus, rail, port, aviation facilities within 3 mile radius
- **Substantial economic benefit** (2017 data)
 - MKE generates over 26,000 jobs for residents of the Milwaukee area
 - More than 1.5M visitors through MKE spent over \$1.4B locally
 - MKE generates \$900M in personal income locally

What is a Master Plan Update?

It is the comprehensive study of an airport's short-, medium-, and long-term development needs to meet future aviation demand. A master plan provides the framework for future development to safely and cost-effectively satisfy aviation demand while considering potential environmental and socioeconomic impacts.

What does a master plan do?

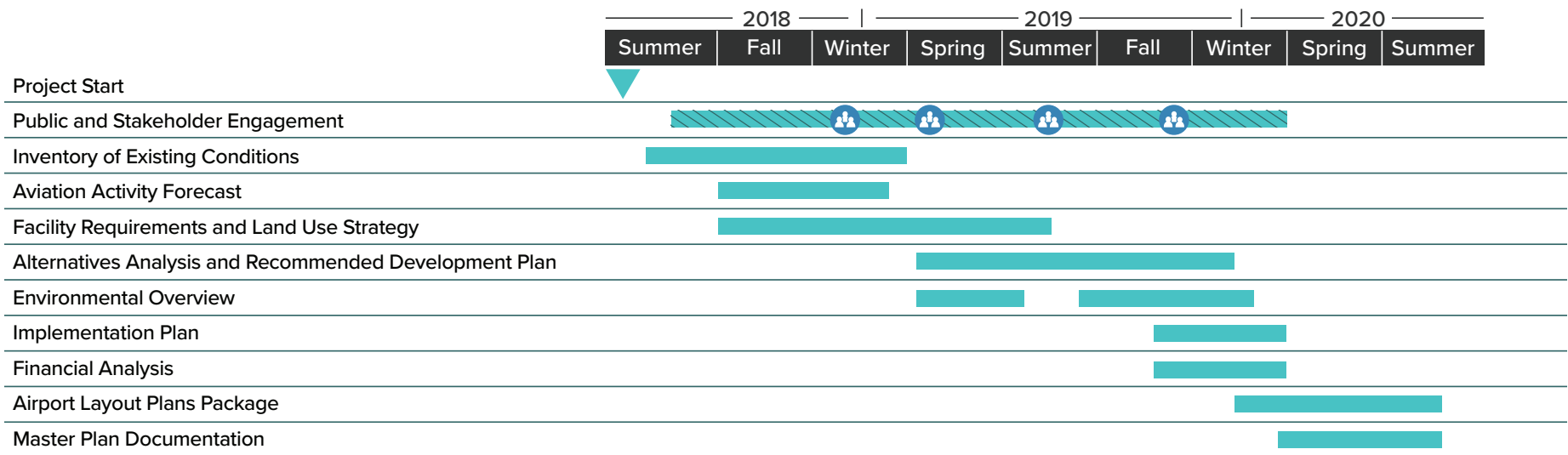
- Supports strategic decision-making by MKE in response to demand
- Establishes an organized and efficient concept for MKE development

What is evaluated as part of the Master Plan?

- Airfield safety, capacity, and efficiency
- Passenger volumes and aviation activity
- Cargo operations
- Terminal space needs
- Airport access and parking
- Support facilities
- Infrastructure needs
- FAA requirements
- Revenue generating opportunities

Master Plan Schedule

- Overall 24-month Study
- Anticipated Completion: Summer 2020



Legend: Public Meeting

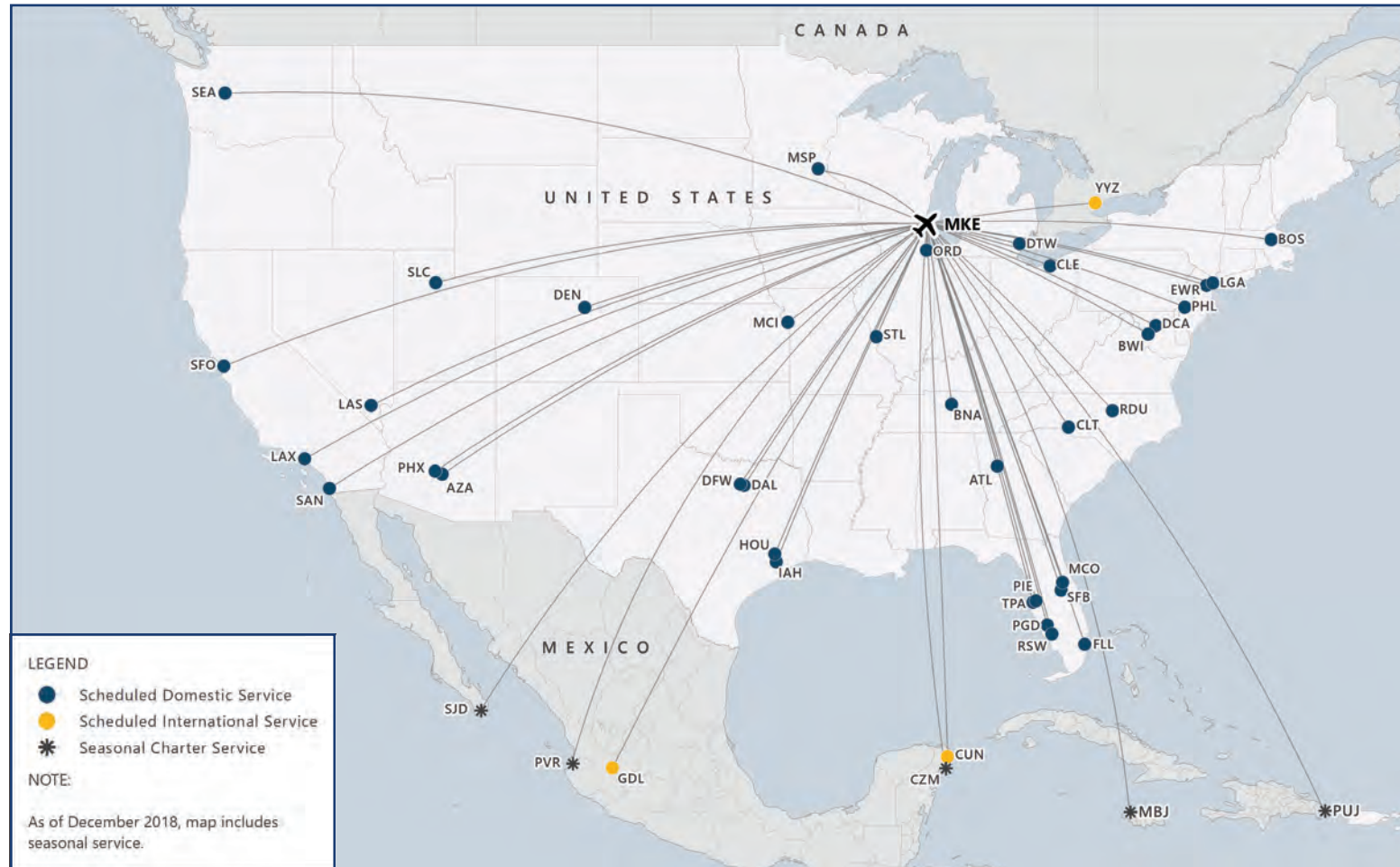
Note: Approximate Timing

What is an Inventory?



The inventory is the foundation for subsequent analyses and concept planning.

Route Network



SOURCES: Innovata, Diio Mi Schedule Dynamic Table Report, December 12, 2018 (destination data); OpenFlights.org, December 2018 (routes); Esri 2010 Data, 2010 (regions).

Non-Stop Destinations

36 Domestic
8 International

Airlines

9 Mainline
17 Affiliate (Regional)
5 Cargo

Major MKE Facilities



Southeast Wisconsin Regional Growth



Forecasts of Aviation Activity



Influences on Aviation Demand

- National and global economy
- State of the airline industry
- Competing airports
- Aviation fuel costs
- Regional economic development
- Airport service area



Forecasts Prepared

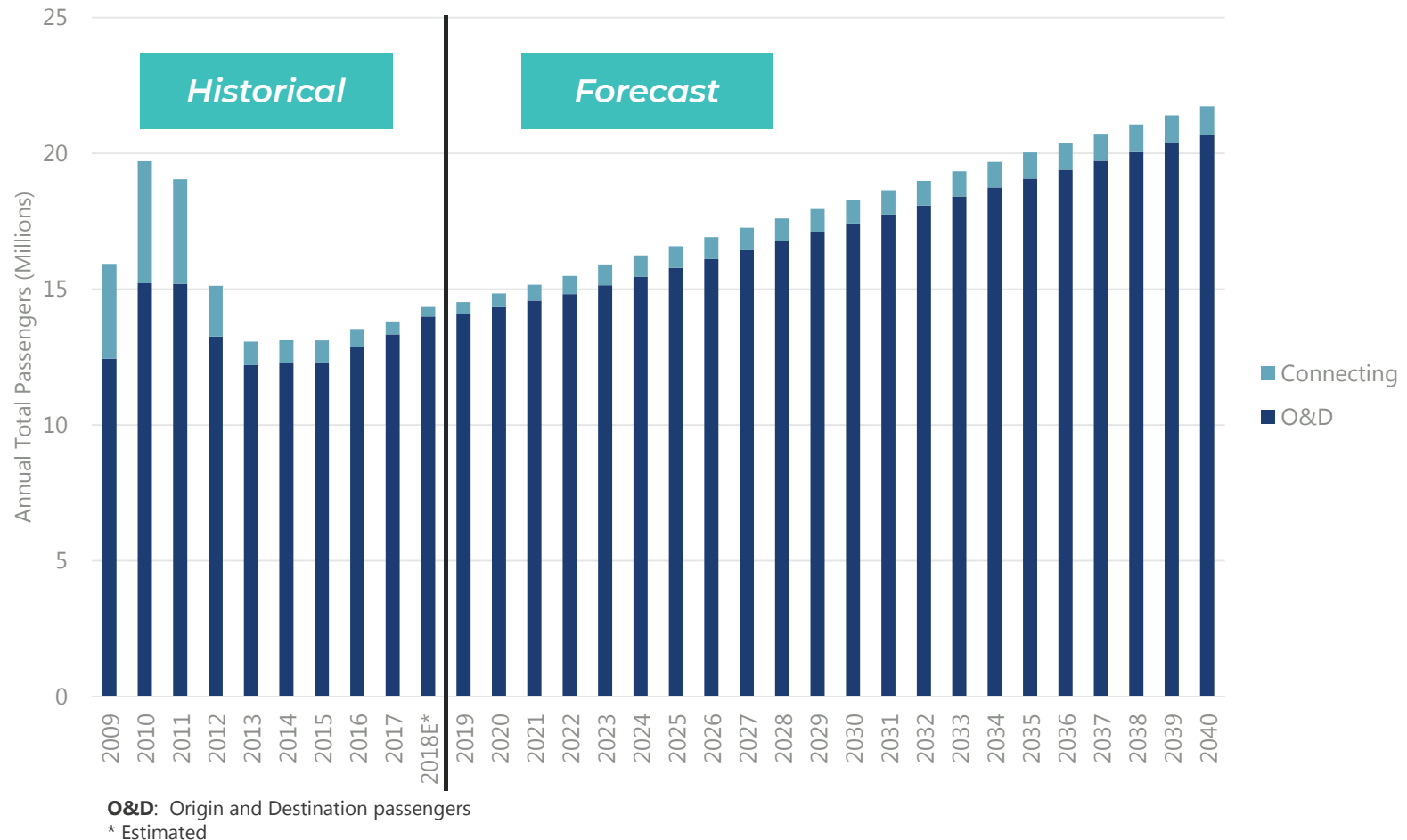
- Passenger (originating, connecting, domestic, international)
- Aircraft operations (airline, cargo, general aviation, military)
- Cargo tonnage
- Aircraft fleet (size/type of aircraft)
- Based aircraft
- Peak activity characteristics

The FAA reviews and approves Master Plan Forecasts.

Baseline Total Passenger Forecast

(total passengers = arriving and departing passengers)

These forecasts have been submitted to the FAA for the agency's required review and will not be considered as final until FAA approval is received.

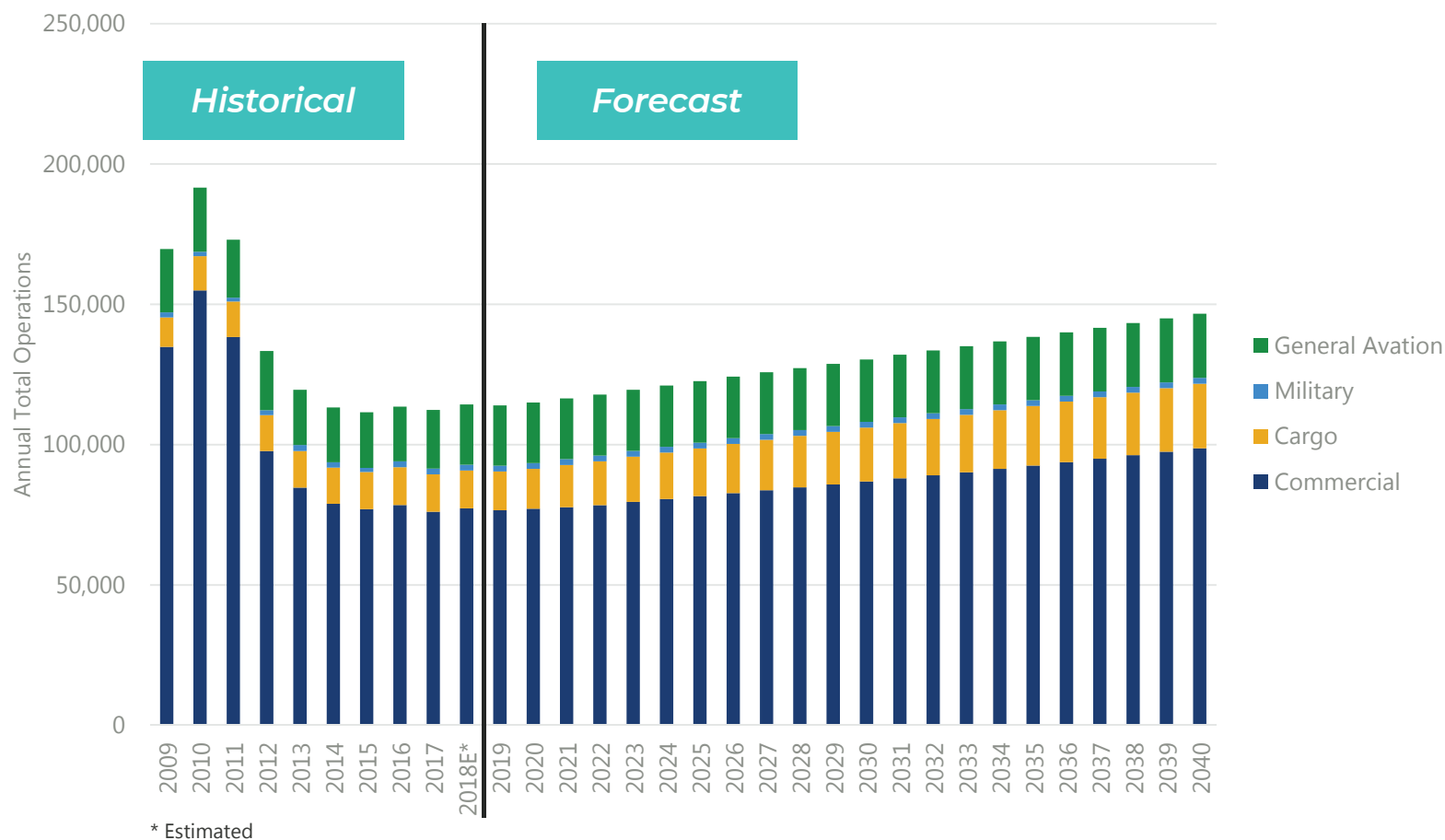


SOURCES: U.S. DOT T-100 and DB1b Survey (historical); Milwaukee General Mitchell International Airport (historical); Ricondo & Associates, Inc. (Forecast), November 2018.

Baseline Aircraft Operations Forecast

(Operations = takeoffs and landings)

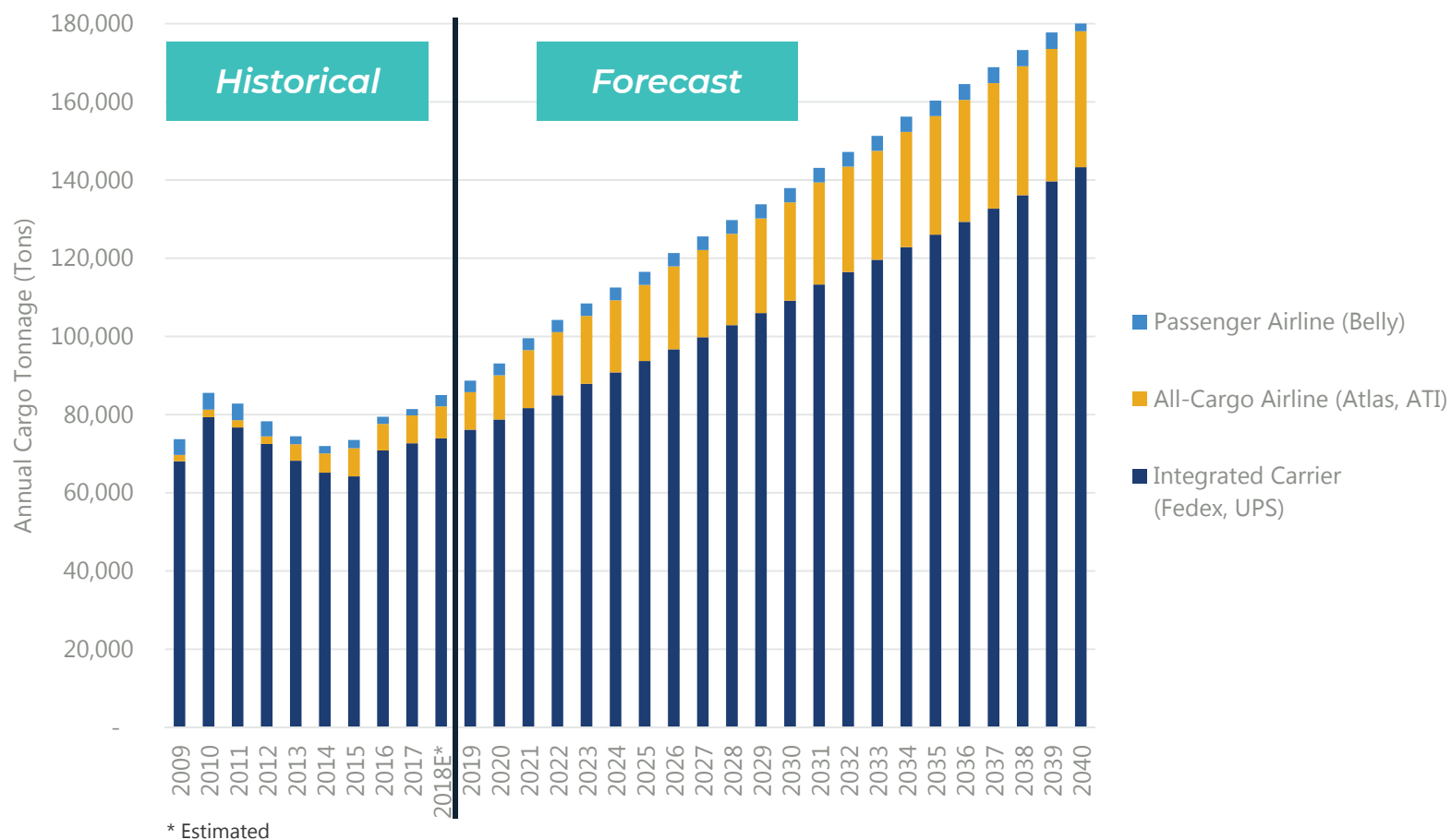
These forecasts have been submitted to the FAA for the agency's required review and will not be considered as final until FAA approval is received.



SOURCES: Milwaukee General Mitchell International Airport (historical); FAA OPSNET (historical); Ricondo & Associates, Inc. (Forecast), November 2018.

Baseline Air Cargo Forecasts Integrated, All-Cargo, and Passenger

These forecasts have been submitted to the FAA for the agency's required review and will not be considered as final until FAA approval is received.

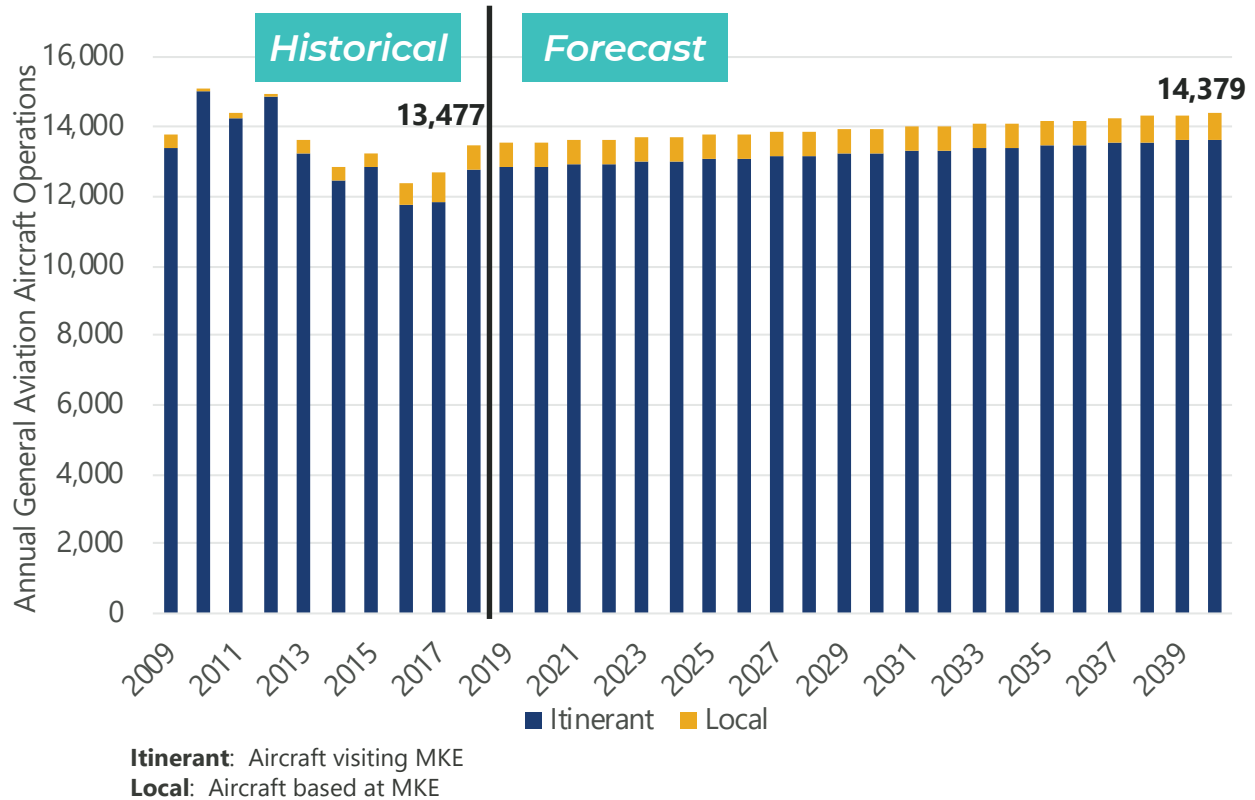


SOURCES: Milwaukee General Mitchell International Airport (historical); U.S. DOT T-100; Ricondo & Associates, Inc. (Forecast), November 2018.

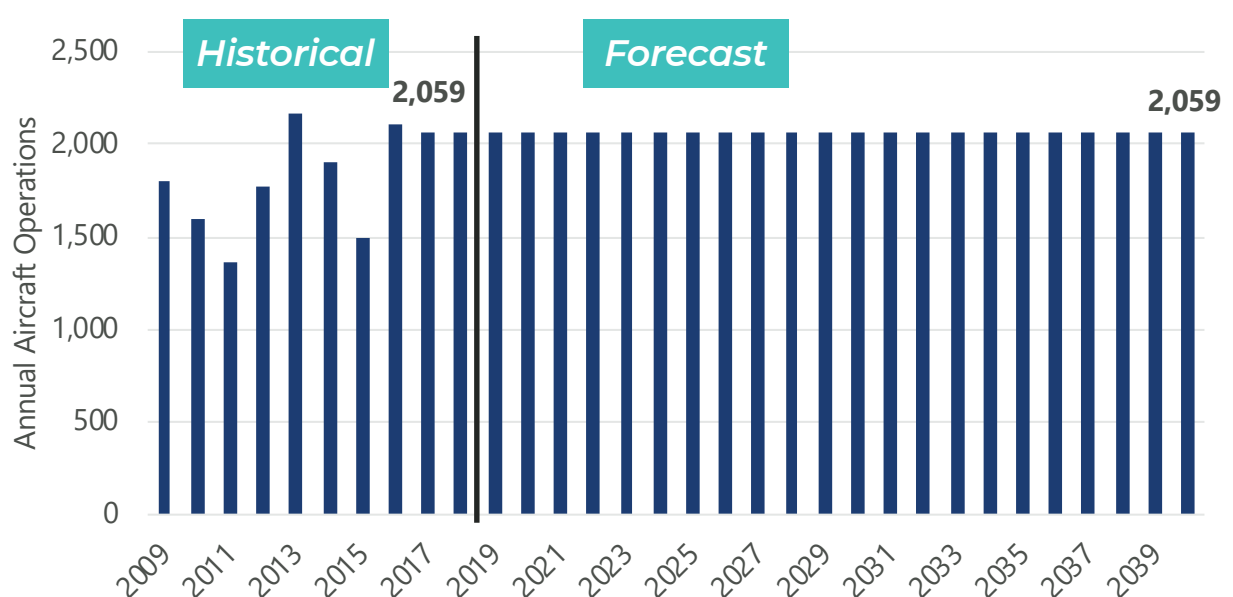
Baseline GA and Military Operations Forecast

These forecasts have been submitted to the FAA for the agency's required review and will not be considered as final until FAA approval is received.

GENERAL AVIATION OPERATIONS FORECAST



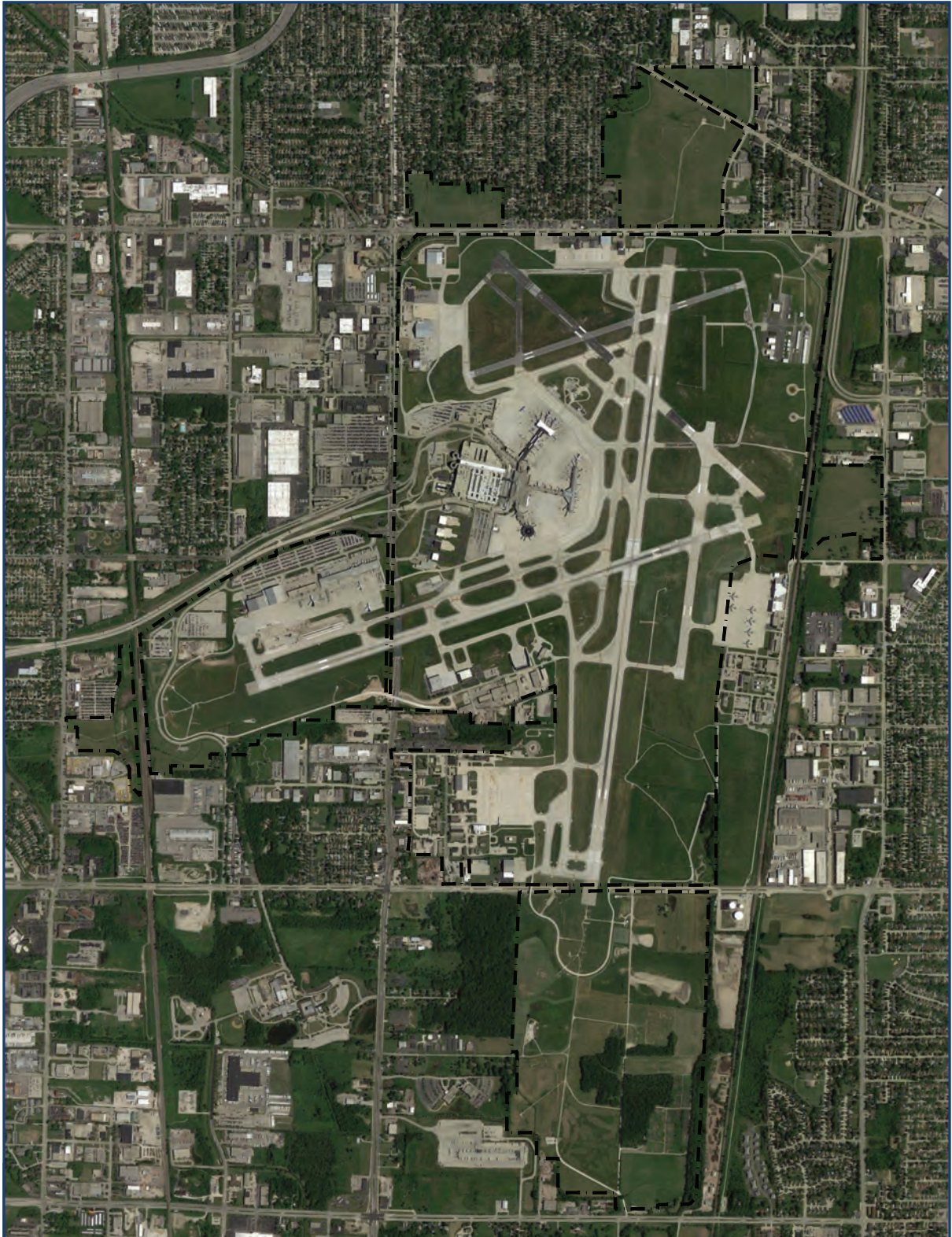
MILITARY OPERATIONS FORECAST



High Scenario Forecast is in Development

- High Scenario Forecast adjusts Baseline Forecast to account for uncertainties and to incorporate flexibility into planning conclusions
 - **Increased Airline Service**
 - Increased airline connecting activity
 - Enhanced development-related socioeconomic factors
 - Increased passenger capture from counties between Milwaukee and Chicago
 - **Cargo**
 - New bi-directional demand to accommodate increased manufacturing
 - freighter flights from Asian cargo carriers
 - potential cargo flights to Europe and other international destinations
 - Additional DHL activity to accommodate e-commerce/Amazon cargo demand patterns and to support new distribution center in Oak Creek
 - Additional FedEx/UPS flights to support expanding e-commerce activity

Milwaukee Mitchell International Airport



WE VALUE PUBLIC INVOLVEMENT

**Your comments are important to
the planning of MKE's future.**

**Please connect with us on our website:
mkeupdate.com**

Comment forms are also available on tables located near the exit.