

MILWAUKEE MITCHELL INTERNATIONAL AIRPORT



PUBLIC OPEN HOUSE



Ballroom C
(Lower Level)

MILWAUKEE MITCHELL INTERNATIONAL AIRPORT



PUBLIC OPEN HOUSE



Ballroom C

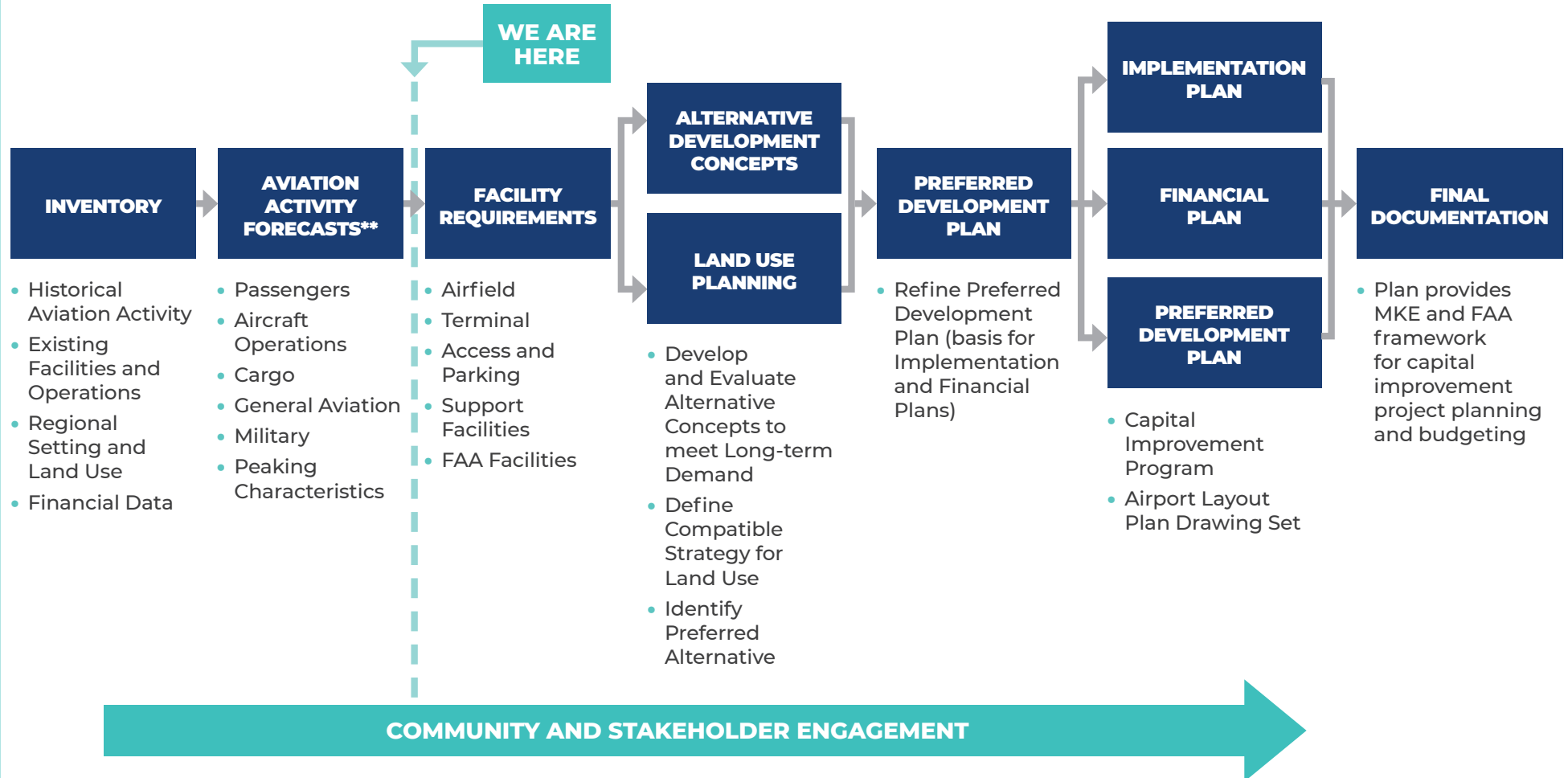
WELCOME TO THE
MILWAUKEE MITCHELL INTERNATIONAL AIRPORT



PUBLIC OPEN HOUSE

MKEUPDATE.COM

Master Planning Process



** Requires FAA Approval

About MKE

- Purchased in 1926 → First terminal building opened in 1927
- Five runways
- Experienced **9.3% passenger growth** from 2015-2018
- Only airport in Wisconsin or Illinois with service from all four major domestic airlines
- **44 Non-stop destinations**; 160 one-stop international destinations
- Largest airport in Wisconsin
- Located 6 miles south of downtown
- Bus, rail, port, aviation facilities within 3 mile radius
- **Substantial economic benefit** (2017 data)
 - MKE generates over 26,000 jobs for residents of the Milwaukee area
 - More than 1.5M visitors through MKE spent over \$1.4B locally
 - MKE generates \$900M in personal income locally

What is a Master Plan Update?

It is the comprehensive study of an airport's short-, medium-, and long-term development needs to meet future aviation demand. A master plan provides the framework for future development to safely and cost-effectively satisfy aviation demand while considering potential environmental and socioeconomic impacts.

What does a master plan do?

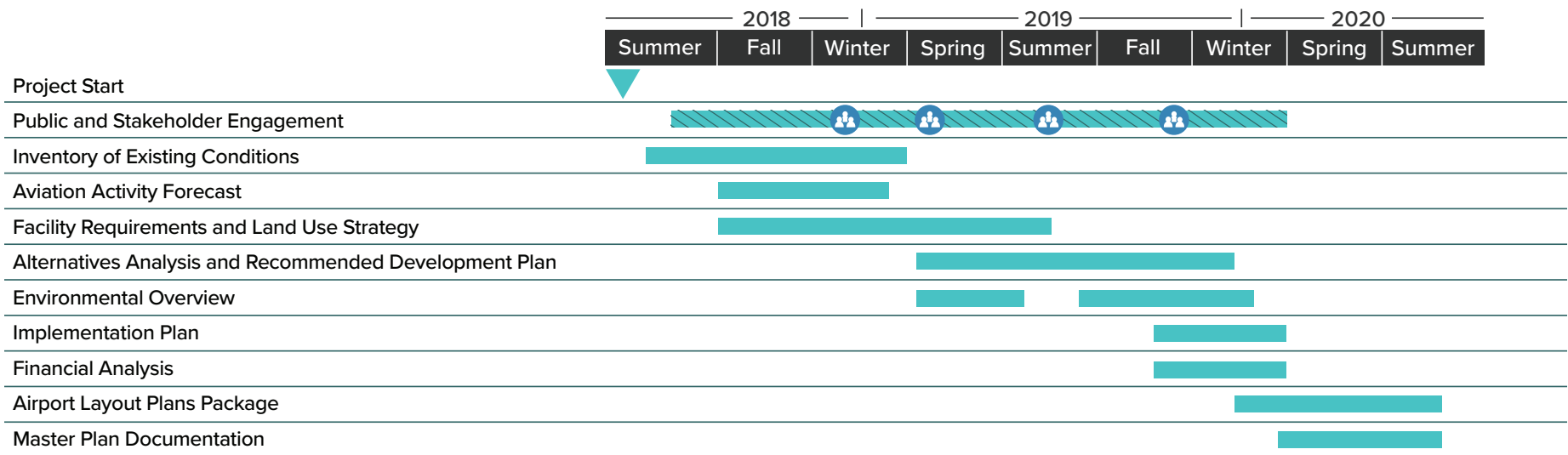
- Supports strategic decision-making by MKE in response to demand
- Establishes an organized and efficient concept for MKE development

What is evaluated as part of the Master Plan?

- Airfield safety, capacity, and efficiency
- Passenger volumes and aviation activity
- Cargo operations
- Terminal space needs
- Airport access and parking
- Support facilities
- Infrastructure needs
- FAA requirements
- Revenue generating opportunities

Master Plan Schedule

- Overall 24-month Study
- Anticipated Completion: Summer 2020



Legend: Public Meeting

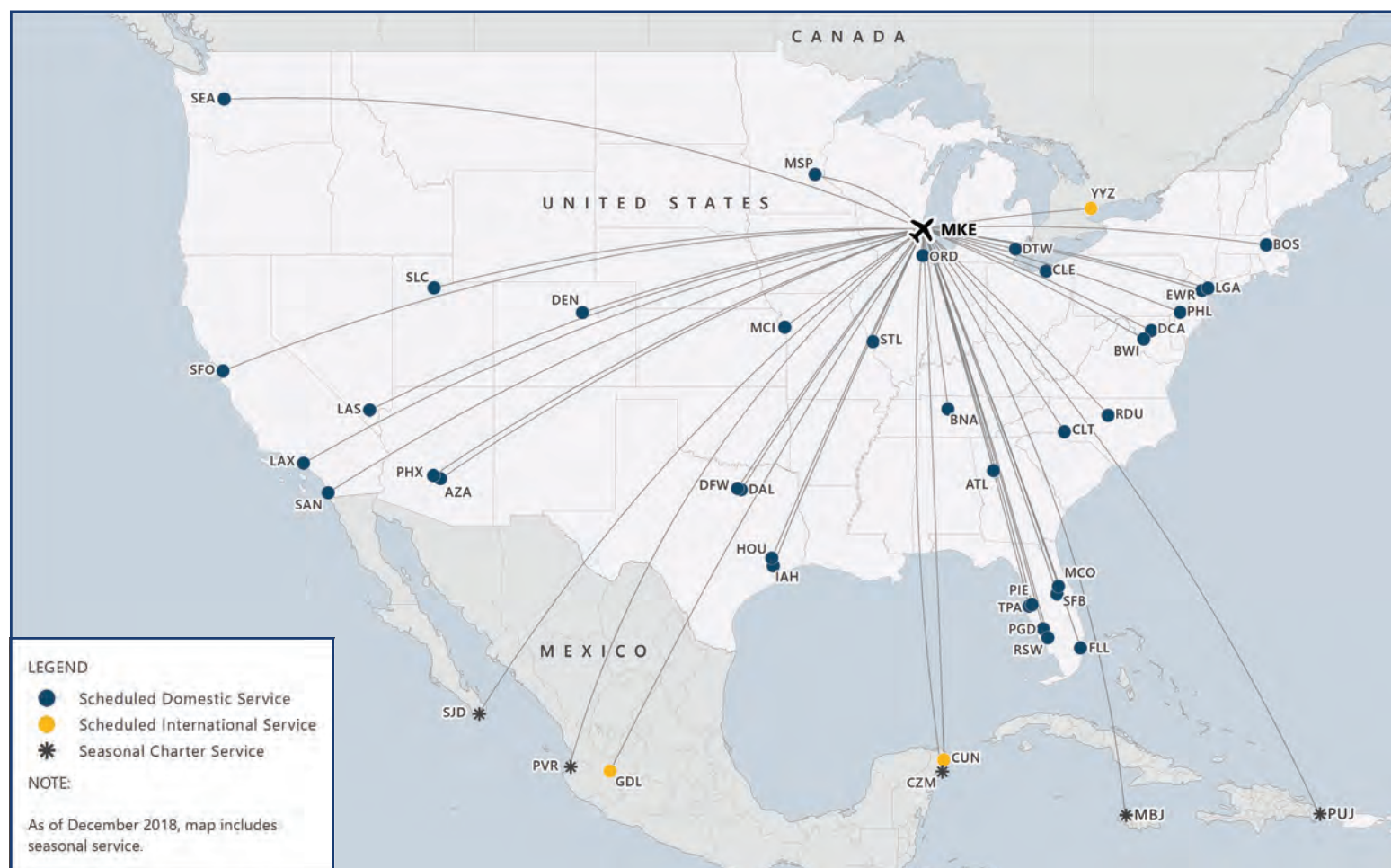
Note: Approximate Timing

What is an Inventory?



The inventory is the foundation for subsequent analyses and concept planning.

Route Network



SOURCES: Innovata, Diio Mi Schedule Dynamic Table Report, December 12, 2018 (destination data); OpenFlights.org, December 2018 (routes); Esri 2010 Data, 2010 (regions).

Non-Stop Destinations

36 Domestic
8 International

Airlines

9 Mainline
17 Affiliate (Regional)
5 Cargo

WE VALUE PUBLIC INVOLVEMENT

**Your comments are important to
the planning of MKE's future.**

**Please connect with us on our website:
mkeupdate.com**

Comment forms are also available on tables located near the exit.

Major MKE Facilities



Southeast Wisconsin Regional Growth



Forecasts of Aviation Activity



Influences on Aviation Demand

- National and global economy
- State of the airline industry
- Competing airports
- Aviation fuel costs
- Regional economic development
- Airport service area



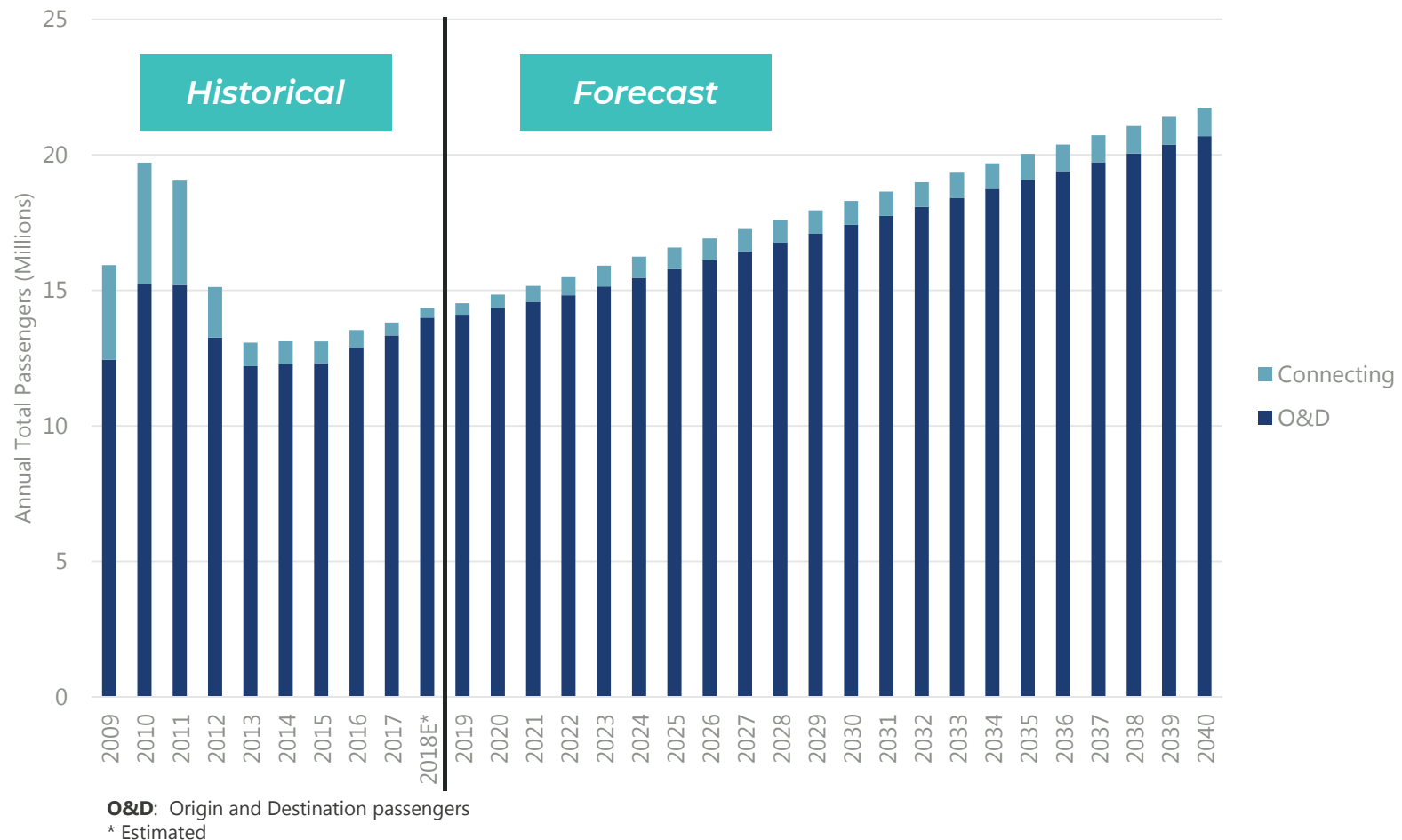
Forecasts Prepared

- Passenger (originating, connecting, domestic, international)
- Aircraft operations (airline, cargo, general aviation, military)
- Cargo tonnage
- Aircraft fleet (size/type of aircraft)
- Based aircraft
- Peak activity characteristics

The FAA reviews and approves Master Plan Forecasts.

Baseline Total Passenger Forecast

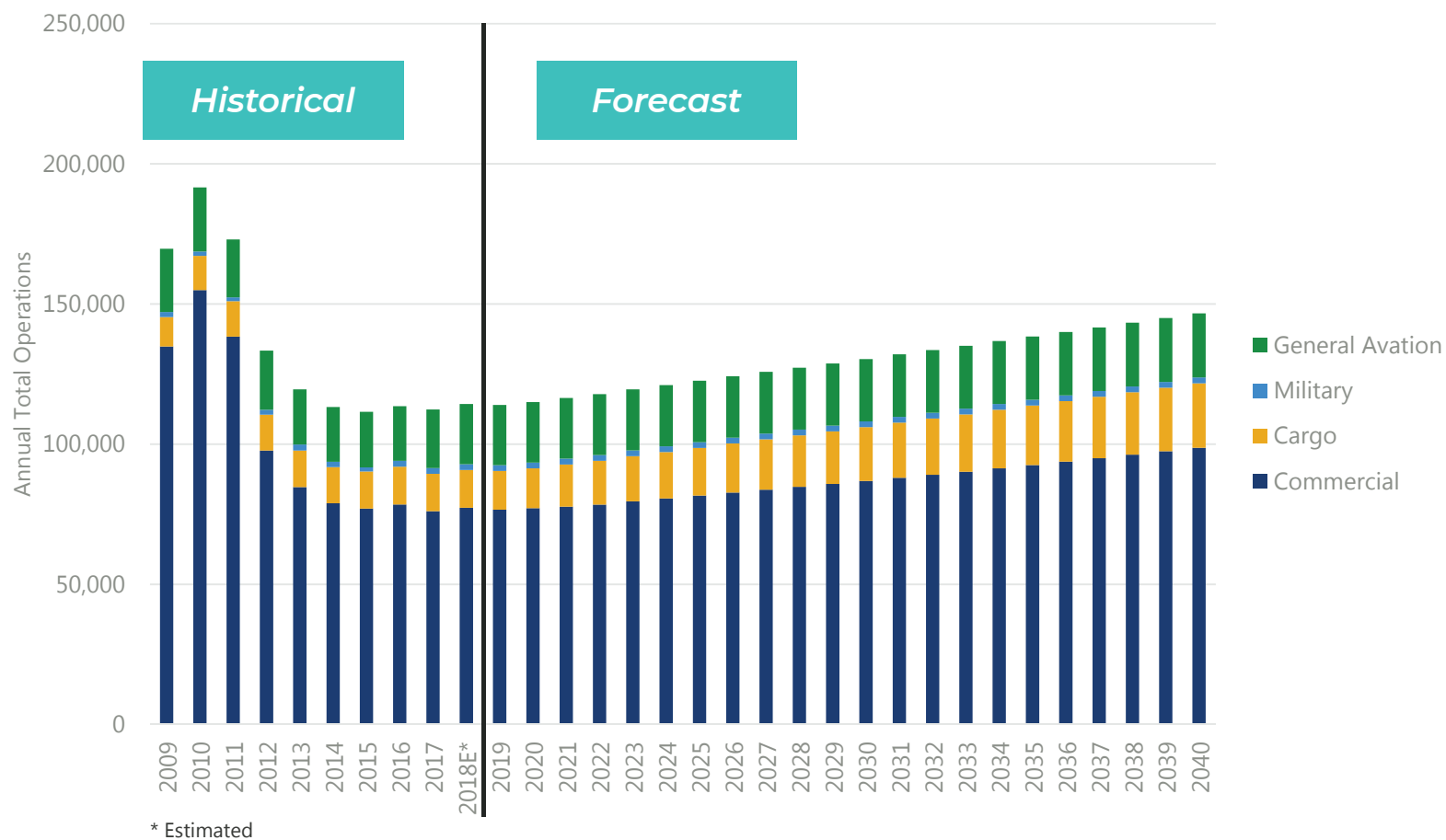
(total passengers = arriving and departing passengers)



SOURCES: U.S. DOT T-100 and DB1b Survey (historical); Milwaukee General Mitchell International Airport (historical); Ricondo & Associates, Inc. (Forecast), November 2018.

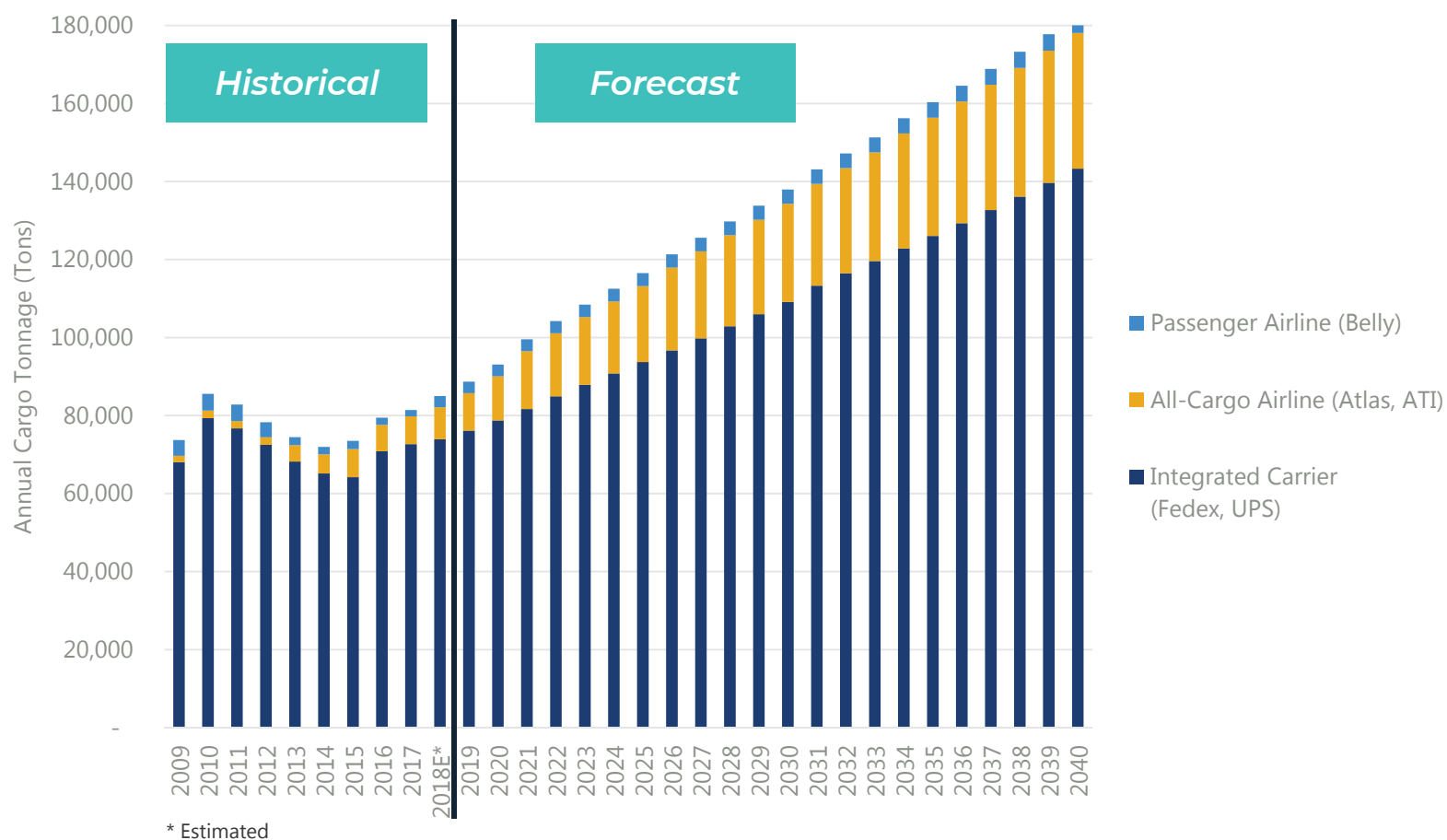
Baseline Aircraft Operations Forecast

(Operations = takeoffs and landings)



SOURCES: Milwaukee General Mitchell International Airport (historical); FAA OPSNET (historical); Ricondo & Associates, Inc. (Forecast), November 2018.

Baseline Air Cargo Forecasts Integrated, All-Cargo, and Passenger



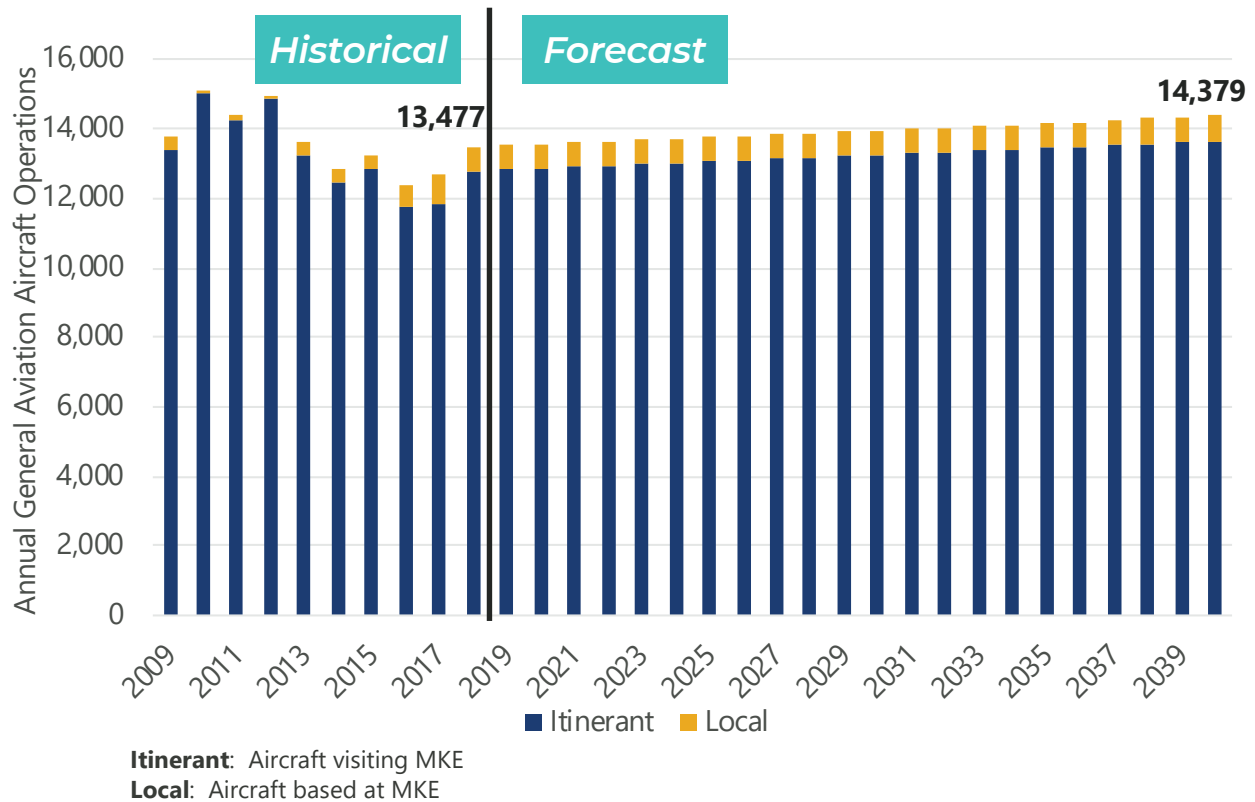
SOURCES: Milwaukee General Mitchell International Airport (historical); U.S. DOT T-100; Ricondo & Associates, Inc. (Forecast), November 2018.

High Scenario Forecast is in Development

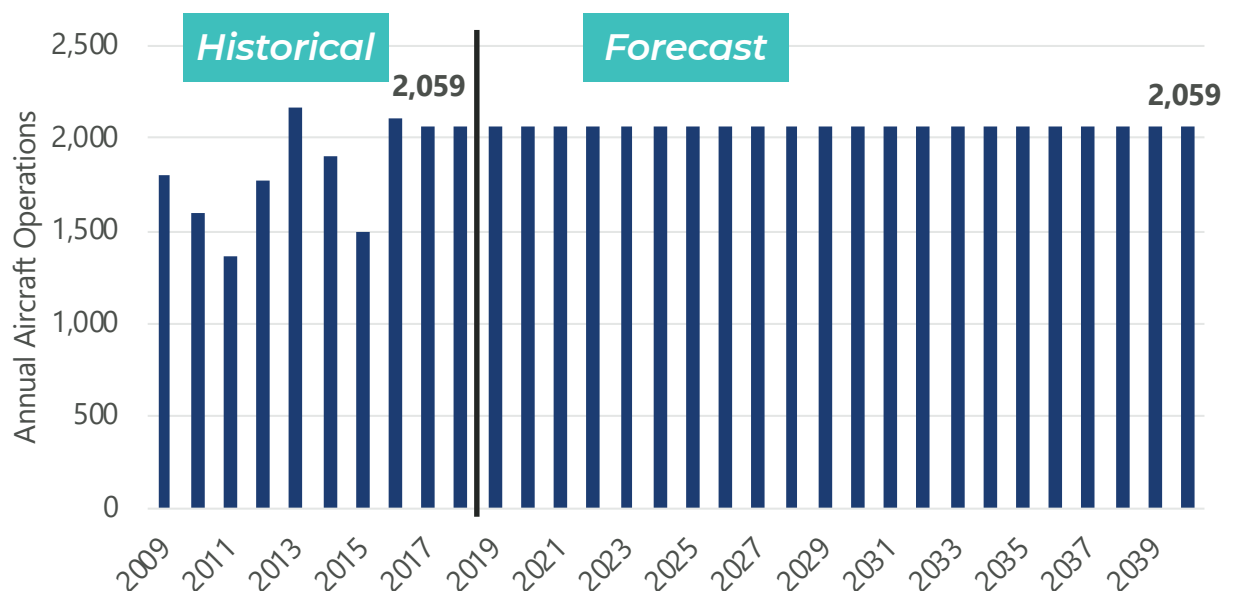
- High Scenario Forecast adjusts Baseline Forecast to account for uncertainties and to incorporate flexibility into planning conclusions
 - **Increased Airline Service**
 - Increased airline connecting activity
 - Enhanced development-related socioeconomic factors
 - Increased passenger capture from counties between Milwaukee and Chicago
 - **Cargo**
 - New bi-directional demand to accommodate increased manufacturing
 - freighter flights from Asian cargo carriers
 - potential cargo flights to Europe and other international destinations
 - Additional DHL activity to accommodate e-commerce/Amazon cargo demand patterns and to support new distribution center in Oak Creek
 - Additional FedEx/UPS flights to support expanding e-commerce activity

Baseline GA and Military Operations Forecast

GENERAL AVIATION OPERATIONS FORECAST



MILITARY OPERATIONS FORECAST



Milwaukee Mitchell International Airport

